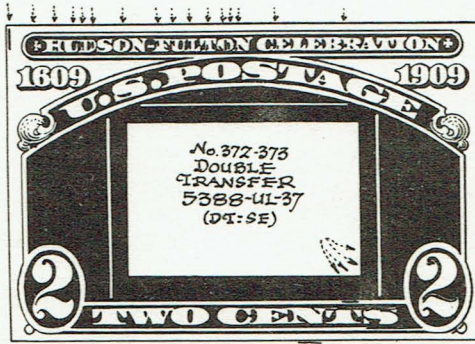
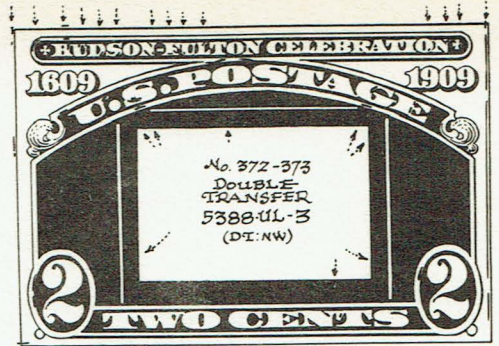


# The SHIFT HUNTERS

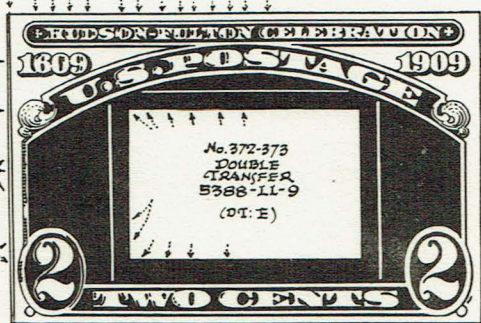
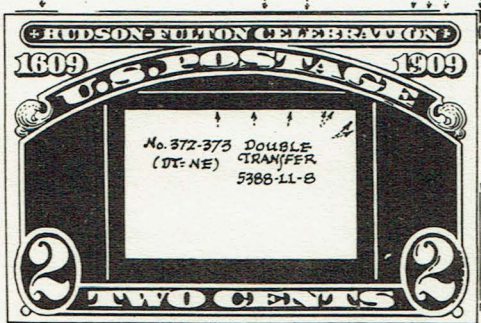
SHIFT HUNTER LETTER No 86  
VOLUME VII No 9 SEPTEMBER

hope you like it! This letter and that to follow will give the complete report of all varieties in the 2¢ Hudson-Fulton stamp of 1909, with the correct plate position shown in each accurate illustration. Some of these have been reported before, in SHL #23, KING and JOHL Vol. I, SHL #65 and elsewhere, but the positions of them have not been previously known or published. Cooperators making a complete report possible are H. M. Jones, J. C. Schenk, C. S. Ernst, and Charles. L. Palmer... all of whom we hereby publicly thank for their interest and assistance.

94 We have been planning to change the format of these letters for many months, but thought that the best time would be the first issue of the new year. However, with the space requirements of a report carrying as large a number of illustrations as this, something had to be done at once -- and here you have the new style report that has considerable more space for illustrations and text than heretofore, and we




inner frame only  
No. 372-373 SHIFTER TRANSFER 5388-UL-43  
also 5394-UL-37 5394-LL-19 25 26



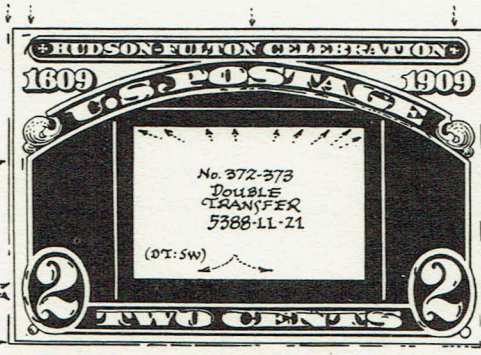
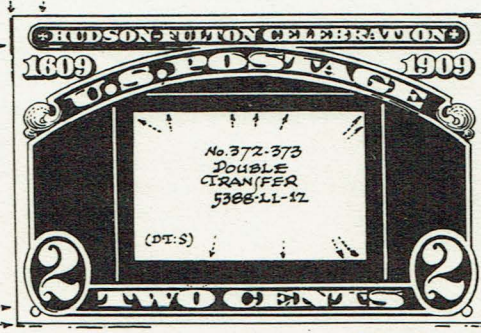



Plate Center Line  
Both Inner and Outer frame  
No. 372-373 SHIFTER TRANSFER 5388-LL-1 (DT: E)

Only eight plates... numbered 5388 to 5395 inclusive... were used for the issue, and only 5388, 5390, 5393 and 5394 are known to contain major varieties. There are 7 double transfers in the UL and LL panes of plate 5388, with the UR and LR panes as yet unchecked. Also in the UL and LL panes are a number of Shifts, the two larger of which are illustrated herein and indicated on the charts by the large "S". The smaller Shifts, wherein the lines of shading in the orna-



the shifting shows only in the lines of shading in the ornaments below either of the year dates, are indicated on the pane charts by the small "s". Without doubt there are many of the unchecked panes available to our members for checking, and we ask that you make every effort to secure and check (or send to us for recording) any except the following panes:  
5388, UL, LL 5392, UL, LL, LR  
5389, LL, LR 5393, UR, LL, LR  
5390, LL, LR 5394, All  
5391, LL, LR 5395, LR  
Let's finish this job NOW!

Cordially,  
Lee M. Ryan

P.S. The Shift Hunters are a COOPERATING group of Plate Research Students who are publishing the discoveries of each for the benefit of all. The more you give - the more you get. Send YOUR finds in for record, and report NOW! Subscriptions to these Shift Hunter Letters \$2.00 per year.

ADDRESS ALL COMMUNICATIONS TO  
92 E LYNN ST, SEATTLE WASH.